



**LILY® SUGAR'N CREAM®
ORANGE SLICE PURSE (TO CROCHET)**

MEASUREMENTS

Approx 13" [33 cm] wide x 10" [25.5 cm] high (excluding handle).

MATERIALS

Lily® Sugar'n Cream® (70.9 g/2.5 oz; 109 m/120 yds)
Tangerine (01699) **3 balls (250 m/275 yds)**

Size U.S F/5 (3.75 mm) crochet hook or size needed to obtain gauge.
Purchased handle approx 22" [56 cm] long with metal rings.

GAUGE

16 sc and 17 rows = 4" [10 cm].

ABBREVIATIONS

www.sugarncream.com/abbreviations

Approx = Approximately	Rem = Remain(ing)
Ch = Chain(s)	Rep = Repeat
Dcpb = Yoh and draw up a loop around post of next st at back of work inserting hook from right to left. (Yoh and draw through 2 loops on hook) twice - 1 dcbp made.	RS = Right side
	Sc = Single crochet
	Sl st = Slip stitch
	St(s) = Stitch(es)
	Tog = Together

INSTRUCTIONS

Front and Back (make 2 pieces alike).

(See Chart I on page 2).

Ch 27.

1st row: (RS). Working in horizontal 'bump' at back of each ch, sl st in 2nd ch from hook. Sl st in each ch to end of chain. Turn. 26 sts.

2nd row: Ch 1. Working in back loops only, sl st in each of next 22 sts. Turn. Leave rem sts unworked.

3rd and alt rows: Ch 1. Working in back loops only, sl st in each st to end of row. Turn.

4th row: Ch 1. Working in back loops only, sl st in each of next 18 sts. Turn. Leave rem sts unworked.

6th row: Ch 1. Working in back loops only, sl st in each of next 14 sts. Turn. Leave rem sts unworked.

8th row: Ch 1. Working in back loops only, sl st in each of next 10 sts. Turn. Leave rem sts unworked.

10th row: Ch 1. Working in back loops only, sl st in each of next 10 sts. Sl st in each of next 4 missed sts. Turn. Leave rem sts unworked.

12th row: Ch 1. Working in back loops only, sl st in each of next 14 sts. Sl st in each of next 4 missed sts. Turn. Leave rem sts unworked.

14th row: Ch 1. Working in back loops only, sl st in each of next 18 sts. Sl st in each of next 4 missed sts. Turn. Leave rem sts unworked.

16th row: Ch 1. Working in back loops only, sl st in each of next 22 sts. Sl st in each of next 4 missed sts. Turn. 26 sts.

17th row: As 3rd row.

Rep 2nd to 17th rows 7 times more, then rep 2nd to 16th rows once. Fasten off, leaving a long end. Thread end onto tapestry needle and draw tightly through narrow row ends at center. Fasten securely.



P.O. Box 40 Listowel ON N4W 3H3



Edging: (See Chart II).

1st row: (RS). Join yarn with sl st at outer edge. Ch 1. Work 73 sc along outer edge to opposite corner. Fasten off.

2nd row: (RS). Inserting hook from back to front, work sl st around post of 1st sc of last row. Ch 2 (counts as st). Dcbp around post of each sc to end of row. Fasten off.

Join Front and Back: Place RS of Front and Back tog and pin edging sts tog. Working through both thicknesses and in back loop only of each st across, join yarn with sl st in first dcbp. Sl st in each dcbp to end of row. Fasten off.

Sew handle rings in position at each side of Bag as shown in picture.

CHART I

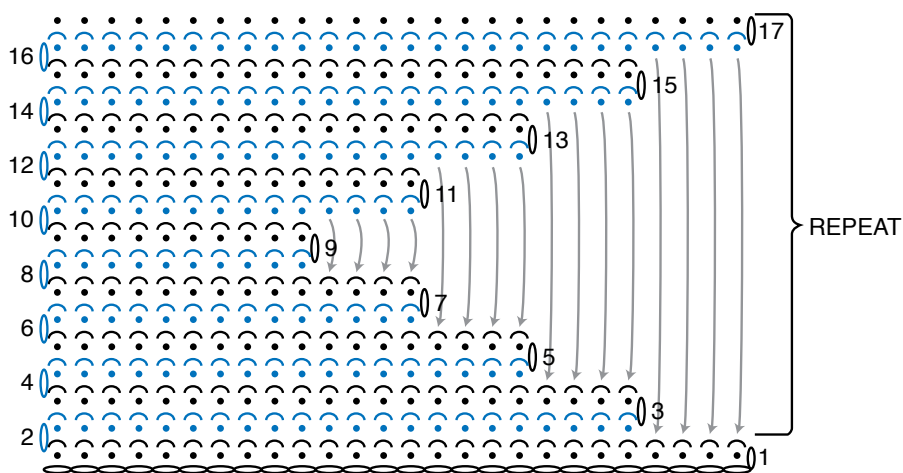
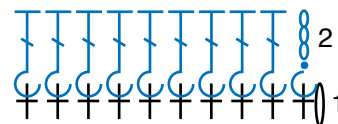


CHART II



KEY

- = chain (ch)
- = slip st (sl st)
- ∩ = worked in back loop only
- ⊖ = sl st back post
- ⌋ = double crochet back post (dcbp)



P.O. Box 40 Listowel ON N4W 3H3